

Disney

BITZEE



WISH UPON A STAR  
TO ATTRACT NEW  
DISNEY CHARACTERS!

LEGENDARY



Minnie Mouse



Olaf



Stitch

RARE



Mickey Mouse



Lightning McQueen



Sulley



Alien



Nemo



Remy



Wall-E

COMMON



Donald Duck



Daisy Duck



Goofy



Sven



Bruni



Flounder



Sebastian



Simba



Pumbaa



Timon



Dory



Mike



Dug



Lumière



Chip



Pua



Hei Hei



Abu



Marie



Pascal

<http://play.bitzee.com>

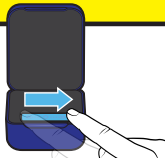
Patent information patents.spinmaster.com. • TM & ©2024 Spin Master Ltd. All rights reserved.



# 1

## GET STARTED

1

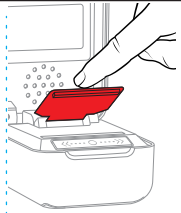


**EXIT TRY-ME -**  
Swipe once from left to right.

2



**WATCH -**  
Your Bitzee is here to meet you.



**CAUTION -** Do not poke, grab or pull the flexible display. Only touch the display gently from above.

# 2

## TUTORIAL: LEARN TO PLAY

Learn to play with your Bitzee by following the tutorial on screen.



**TOUCH (FROM ABOVE ONLY)**  
Touch the top edge of the flexible display to interact with your Bitzee!



**TILT**  
(left or right)



**TILT**  
(forward or backward)



**SHAKE**  
Shake your Bitzee.



**LIFT UP**  
(quickly)



**SWIPE BAR**  
Swipe finger across bar to enter Main Menu.



**NAVIGATE**  
Swipe until you see the Movie Moments icon.



**SELECT**  
Touch the Movie Moments icon to play your Disney character's favorite movie scene!



Complete the tutorial stages! Once you finish the tutorial, you are ready to play!

# 3

## PLAYING WITH BITZEE

Play with your Bitzee by interacting with them.



**INTERACT -**  
Use the actions you learned in the tutorial to keep your Bitzee happy and fill their Star Meter.



**MAKE A WISH -**  
Help your Bitzee earn more Wishing Stars by completing "needs messages." Use the Wishing Star to attract a new Bitzee!



**COLLECT & PLAY -**  
Discover all 30 Bitzee and unlock movie moments from all your favorite Disney characters!

⚠ WARNING: FLASHING LIGHTS - See Instructions.



## MAIN MENU

When playing with a Bitzee, SWIPE to access the Main Menu.  
Touch the flexible display to select a menu option.



**MOVIE MOMENTS**  
Touch to see characters perform their favorite scene.



**GAMES**  
Each Rare or Legendary Bitzee has a unique game. Touch to play!



**STAR METER**  
See how close you are to getting a new Wishing Star.



**SETTINGS**  
Touch to go to the Settings Menu.



**WISH BOOK**  
Touch to open. Swipe through to see all available Wishing Stars. Touch a star to attract a new Disney character.



**THEATER**  
Touch to open. Swipe through Bitzee. Touch to select Bitzee.

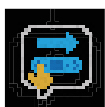


## NEEDS MESSAGES

Your Bitzee will send a message if they need something. Don't ignore these or you could lose a Disney character! Tap on the message to address it or swipe to ignore it.



**TOUCH -**  
When you see this, touch top of Bitzee.



**SWIPE -**  
When you see this, swipe finger across bar.



**SHAKE -**  
When you see this, shake your Bitzee.



**TILT -**  
When you see this, tilt your Bitzee left and right.



## IGNORED MESSAGES

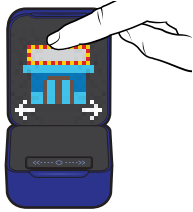
Ignored messages appear as red exclamation marks over the character with the need. Ignore too many needs messages and your Bitzee will run away! You can attract them back by using their Wishing Star.



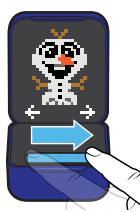
## VIEW YOUR COLLECTION



Play with any of the Bitzee you've collected by swiping to the Main Menu.



Swipe to the Theater and touch to select.



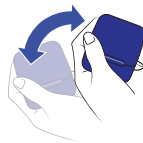
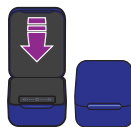
Swipe through your available Bitzee.



Touch a Bitzee to play with them.

# 7

## COLLECT MORE BITZEE



To attract a new Bitzee, swipe through the Main Menu to the Wish Book. If you have Wishing Stars, touching the Wish Book will open it and show your stars.

Swipe through your stars. Touch a star to attract a new Bitzee.

Close pod and wave pod in the air. You'll know you have a new Bitzee when you hear the twinkling sound.

Re-open pod to reveal Disney character.



Collect all 30 Bitzee!

# 8

## RARE/LEGENDARY BITZEE GAMES



Every Rare and Legendary Bitzee has a game you can play. Look for a yellow star!



Swipe to enter the Main Menu. Swipe to the Games icon.

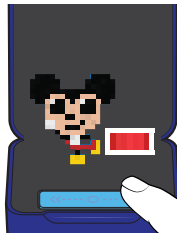


Touch the Games icon to play.



### OLAF

- Touch the Swipe Bar to throw snowballs through the target and help Olaf build a snow sculpture.



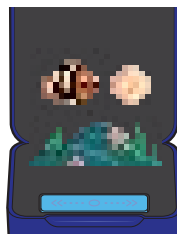
### MICKEY MOUSE

- Touch the left, middle, or right of the Swipe Bar to catch the falling notes and keep Mickey Mouse on the beat.



### ALIEN

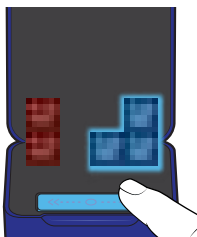
- Touch the Swipe Bar to lower the claw and grab aliens, but don't pick up the balls!



### NEMO

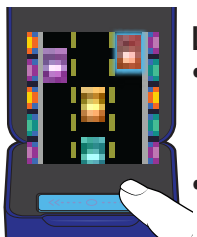
- Help Nemo eat the circle snacks.
- Avoid obstacles by touching the Swipe Bar to swim up and releasing it to swim down.

# RARE/LEGENDARY BITZEE GAMES



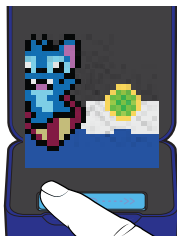
## WALL-E

- Touch the Swipe Bar to move the falling boxes into matching color groups.
- Score points when you get 3 matching boxes in the same group.



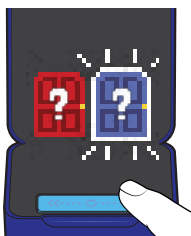
## LIGHTNING MCQUEEN

- Touch the left or right of the Swipe Bar to change lanes and help Lightning McQueen avoid the cars.
- Touch the middle of the Swipe Bar to jump!



## STITCH

- Touch the left or right side of the Swipe Bar to move the surfboard and help Stitch avoid the objects.
- Touch the middle to do a trick whenever you see the camera.



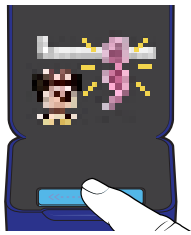
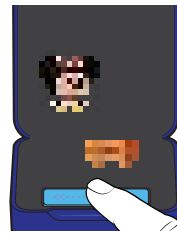
## SULLY

- Help Sulley chase Boo! Remember the order of the doors she runs through.
- Choose them in the same order by touching the Swipe Bar on the right or left side.



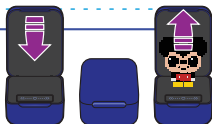
## REMY

- Remember the ingredient order of the recipe.
- Then select them by touching the Swipe Bar below the correct choice.



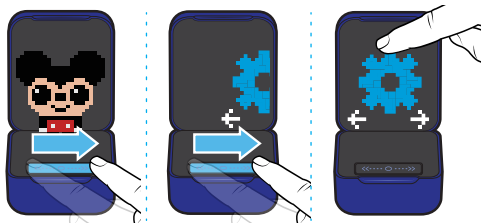
## MINNIE MOUSE

- Help Minnie Mouse shop at the mall. Touch the Swipe Bar to jump over obstacles and grab the flashing items. Avoid the hangers!



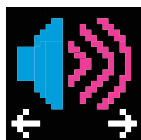
To exit a game at any time, close the pod and re-open it.

# SETTINGS MENU



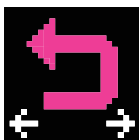
Swipe through the Main Menu until you see the Settings icon. Touch the icon to select.

## VOLUME



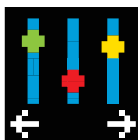
Touch to change the volume.

## GO BACK



Touch Back icon to exit menu.

## ADJUST SCREEN



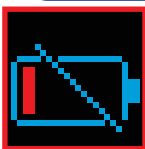
Touch and hold the center of the swipe bar for 2 seconds to enter screen adjustment. Tap the right side of the swipe bar to move the image up. Tap the left side of the swipe bar to move the image down. Shake to reset to default. Touch the flexible display to confirm.

## RESET BITZEE



Hold the Bitzee case level and upright. Then, touch and hold the swipe bar to start the countdown. Do not lift your finger until the countdown finishes and you hear the alarm sound effect. Your Bitzee is now reset to the on-shelf demo.

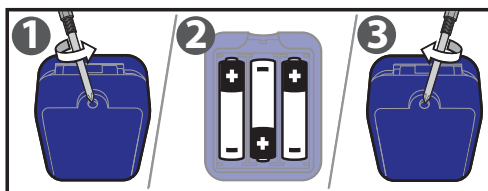
**⚠ CAUTION - THIS ACTION CAUSES A FACTORY RESET AND ERASES ALL EXISTING PLAY HISTORY**



# REPLACE BATTERIES

## LOW BATTERY WARNING

**BEFORE REPLACING BATTERIES, SHUT POD, OR YOUR PROGRESS MAY BE LOST.**



1. Open the battery door with a screwdriver.
2. If used batteries are present, remove these batteries from the unit by pulling up on one end of each battery. DO NOT remove or install batteries using sharp or metal tools. Install new batteries as shown in the polarity diagram (+/-) inside the battery compartment.
3. Replace battery door securely. Check your local laws and regulations for correct recycling and/or battery disposal.

Note: Batteries included are for in-store demonstration and should be replaced to improve performance. Before replacing batteries, shut pod, or your progress may be lost.

**⚠ WARNING:** This toy produces flashes that may trigger epilepsy in sensitised individuals. To reduce exposure to such potential, play in a well-lit room, and do not flash lights directly into eyes.

**⚠ WARNING:** This toy contains inaccessible magnets. Exposed magnets, if inhaled or swallowed can stick together or to other metal objects, and can cause serious or fatal injury. Keep away from electronic and medical devices.

**⚠ WARNING: CHOKING HAZARD**  
– Small parts. Not for children under 3 years.



Spin Master Ltd., 225 King Street West, Toronto ON M5V 3M2 Canada  
Spin Master Inc., PMB #10053, 300 International Drive, Suite 100, Williamsville, NY 14221  
Spin Master International B.V., Kingsfordweg 151, 1043 GR Amsterdam, NL  
Spin Master Australia Pty Ltd, Level 9, 205 Pacific Hwy, St Leonards, NSW 2065; ☎1800 316 982  
Spin Master Toys UK Ltd, Boston House, Boston Drive, Bourne End, Buckinghamshire, SL8 5YS, UK

Patent information / patents.spinmaster.com.  
TM & ©2024 Spin Master Ltd. All rights reserved.

MADE IN CHINA

T22801\_0001\_20147064\_GMLL\_IS\_R1\_Disney\_English

©Disney  
©Disney/Pixar  
www.disney.com

