

# BITZEE™



USE TREATS TO COLLECT ALL 15 PETS!

## COMMON

	Baby	Adult	SUPER BITZEE!		Baby	Adult	SUPER BITZEE!		
Dog					Cat				
Bunny					Clownfish				
Bird					Gecko				
Turtle					Hedgehog				
Snail					Mouse				

## RARE

	Baby	Adult	SUPER BITZEE!
Butterfly			
Poodle			
Chameleon			

## LEGENDARY

	Baby	Adult	SUPER BITZEE!
Mercat			
Unicorn			

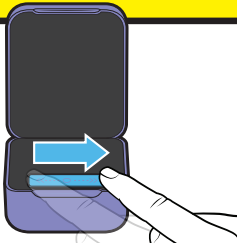
Patent information: [patents.spinmaster.com](http://patents.spinmaster.com).  
 TM & ©2022 Spin Master Ltd. All rights reserved.



# 1

## GET STARTED

1



**EXIT TRY-ME -**

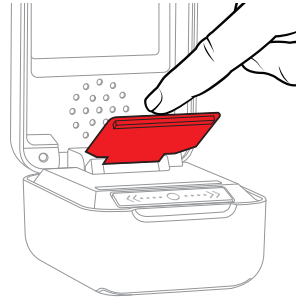
Swipe once from left to right.

2



**WATCH -**

Your Bitzee is here to meet you.



**CAUTION -**  
Do not poke, grab or pull the flexible display. Only touch the display gently from above.

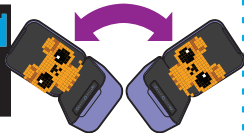
# 2

## TUTORIAL: LEARN TO PLAY

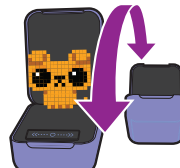
Learn to play with your Bitzee by following the tutorial on screen.



**TOUCH (from above only)**  
Touch the top edge of the flexible display to pet your Bitzee!



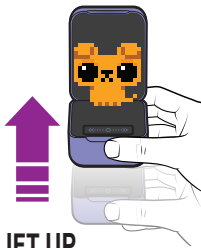
**TILT**  
(left or right)



**TILT**  
(forward or backward)



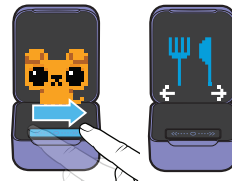
**SHAKE**  
Shake your Bitzee.



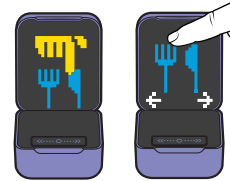
**LIFT UP**  
(quickly)



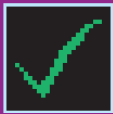
**SWIPE BAR**  
Swipe finger across bar to enter Main Menu



**NAVIGATE**  
Swipe until you see the Food Icon.



**SELECT**  
Touch the Food Icon to feed your Bitzee.

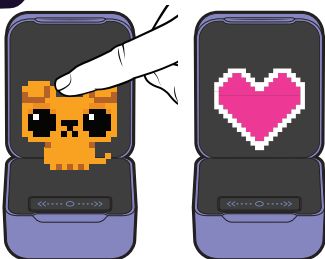


Complete the tutorial stages! Once you finish the tutorial, you are ready to play!

# 3

## PLAYING WITH BITZEE

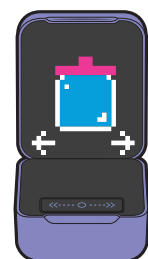
Play with your Bitzee by interacting with them.



**CARE -** Use the actions you learned in the tutorial to care for your Bitzee and fill their Love Meter.



**EVOLVE -** Fill the love meter and your Bitzee will evolve! Baby → Adult → Super Bitzee!  
Each Super Bitzee has a game you can play and gives you a new treat.



**COLLECT -** Use treats to attract more Bitzee and collect all 15 characters!

**⚠ WARNING: FLASHING LIGHTS - See Instructions.**

# 4



## MAIN MENU

When playing with a Bitzee, SWIPE to access the menu.  
Touch the flexible display to select a menu option.



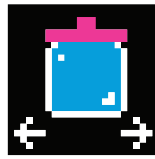
**LOVE METER**  
See how close your Bitzee is to evolving!



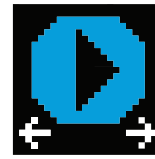
**FOOD**  
Touch to feed your Bitzee.



**HOUSE**  
Touch to open. Swipe through Bitzee. Touch to select Bitzee.



**TREAT JAR**  
Touch to open. Swipe through treats. Touch a treat to attract a new Bitzee.

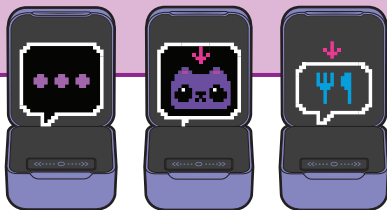


**SUPER BITZEE GAME**  
Each Super Bitzee has a unique game. Touch to play!



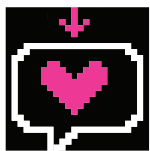
**SETTINGS**  
Touch to go to settings menu.

# 5



## NEED MESSAGES

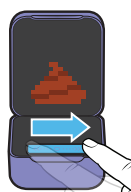
Your Bitzee will send a message if they need something.  
Don't ignore these or you could lose a character!  
Tap on the message to address it or swipe to ignore it.



**LOVE -**  
Bitzee needs love. Touch to pet them.



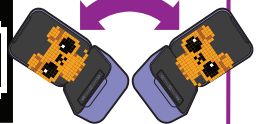
**POOP -**  
Bitzee pooped, touch to select, then swipe to clean.



**FEED -**  
Bitzee is hungry. Touch food icon to feed them.



**SLEEP -**  
Bitzee is tired, tilt left and right to rock them to sleep.

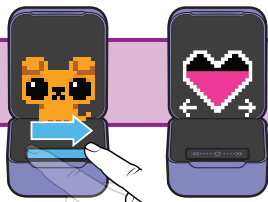


## IGNORED MESSAGES

Ignored needs messages appear as red exclamation marks over the pet with the need. Ignore too many needs messages and your Bitzee will run away! You can attract them back by using their favorite treat.

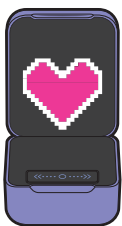


# 6

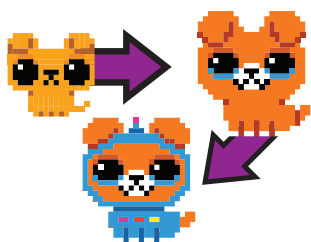


## EVOLVE BITZEE

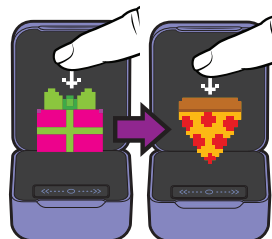
You can check how close your Bitzee is to evolving by swiping to enter the menu and looking at their Love Meter.



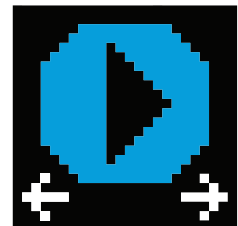
**EVOLVE -** When your Bitzee's Love Meter fills up, it will evolve.



**GROW -** care for your Bitzee and help them grow from Baby to Adult to Super Bitzee!



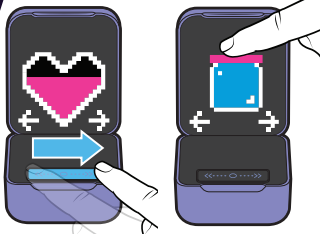
**TREATS -** When a Bitzee reaches Super Bitzee, they give you a treat! Touch to put it in your treat jar. See section 7 for what to do with treats.



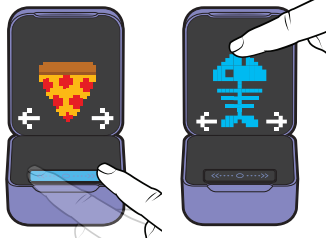
**GAMES -** Each Super Bitzee has a unique game. Touch game icon to play! See Section 9 for more details.

# 7

## ATTRACT MORE PETS



When you want to attract a new Bitzee, swipe through the menu to the treat jar. If you have treats, touching the Treat Jar will open it and show your treats.



Swipe through your treats. Touch a treat to attract a new Bitzee with it. TIP: you start with two extra treats in your jar.



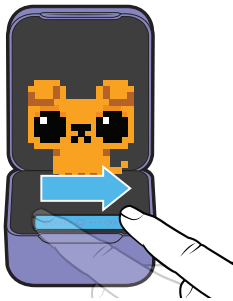
When a new Bitzee eats the treat, they are added to your collection.



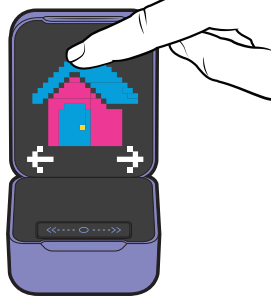
Collect all 15 Bitzee!

# 8

## VIEW YOUR COLLECTION



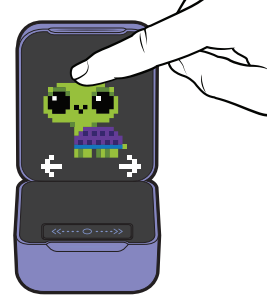
Play with any of the Bitzee you've collected by swiping to the menu.



Swipe to the House Icon and touch to select.



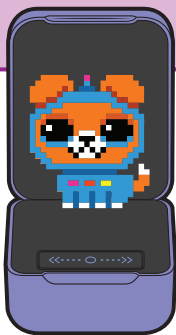
Swipe through your available Bitzee.



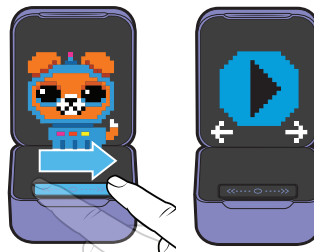
Touch a Bitzee to play with them.

# 9

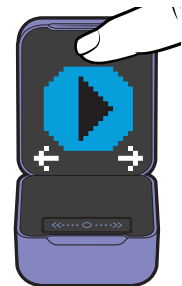
## SUPER BITZEE GAMES



When a Bitzee evolves into a Super Bitzee, they have a game you can play.



Swipe to enter the menu. Swipe to the Super Bitzee Game Icon.



Touch the Game icon to play.

### HEDGEHOG GYMNAST

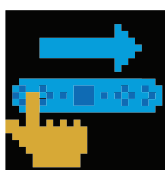
• Follow the prompts to make Hedgehog perform tricks!



TOUCH



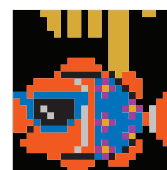
SHAKE



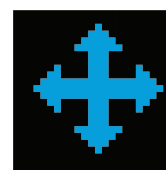
SWIPE

### CLOWNFISH SURFER

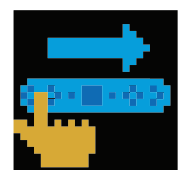
• Follow the prompts to make Clownfish perform tricks!



TOUCH

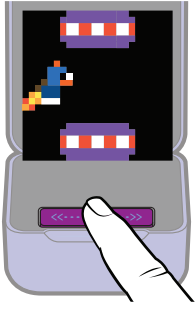


SHAKE



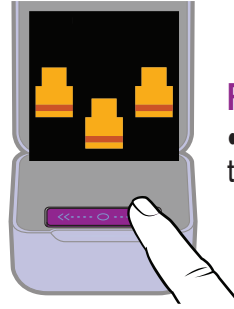
SWIPE

# SUPER BITZEE GAMES (continued)



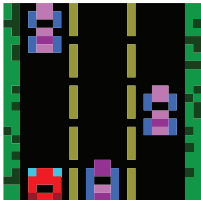
## ROCKET PUP

- Touch the swipe bar to move Pup up and release to move down.
- Avoid objects, the tunnel restores shields, enter the wormhole to complete the game!



## RABBIT MAGICIAN

- Touch the swipe bar below the cup that you think hides the ball.



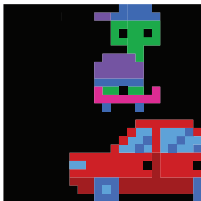
## SNAIL RACER

- Touch left or right on the swipe bar to avoid cars and trucks.



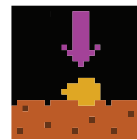
## POODLE FASHIONISTA

- Swipe left and right to choose a hat. Touch the display to confirm.
- Swipe left and right to choose an outfit. Touch display to confirm.



## TURTLE BOARDER

- Touch the swipe bar to make Turtle jump.



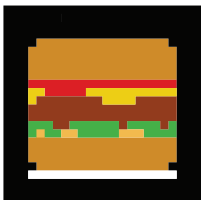
## BUTTERFLY GARDENER

- Follow the prompts to help Butterfly grow flowers.
- Touch display to plant seeds
- Tilt right to water them
- Shake to fertilize



## BUDGIE ROCKSTAR

- Touch the swipe bar when a note reaches the bottom of the screen to play the music.



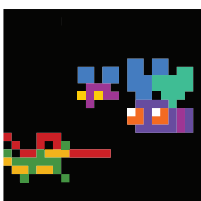
## MOUSE CHEF

- Touch the swipe bar on the left or right to catch falling ingredients.
- Avoid things you can't eat! Don't drop too many bun tops!



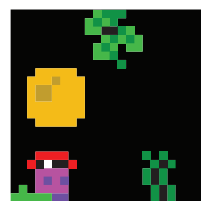
## CHAMELEON ARTIST

- Touch the swipe bar below the color you want for the flashing part.
- Touch the display to confirm your color selection.



## GECKO SUPERHERO

- Touch the swipe bar to catch flies with Gecko's tongue.



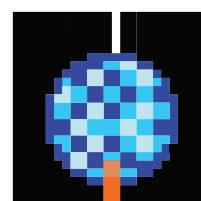
## MER-CAT PIRATE

- Touch the swipe bar to make Mer-Cat swim up, release to swim down.
- Avoid obstacles, collect coins, and grab the treasure chest when you see it!



## CAT DANCER

- Tilt Left = Moonwalk left
- Tilt Right = Moonwalk right
- Touch the swipe bar = Spin
- Shake = Backflip



## UNICORN PARTY ANIMAL

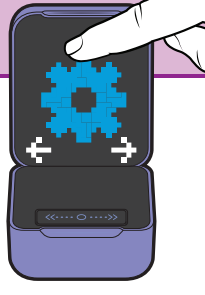
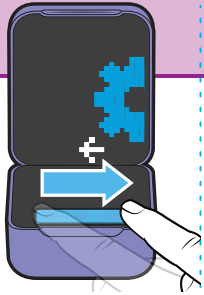
- Touch the swipe bar to break the piñata and release all the Bitzee!
- Touch the swipe bar to add silly sound effects when they dance!



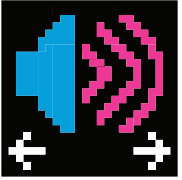
To exit a game at any time, close the case and re-open it.

## SETTINGS MENU

Swipe through the Main Menu until you see the Settings Icon.  
Touch the icon to select.

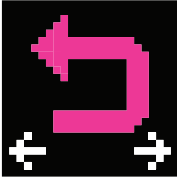


### VOLUME



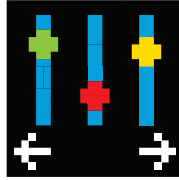
Touch to change the volume.

### GO BACK



Touch Back Icon to exit menu.

### ADJUST SCREEN



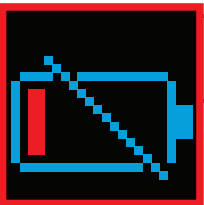
Touch and hold the center of the swipe bar for 2 seconds to enter screen adjustment. Tap the right side of the swipe bar to move the image up. Tap the left side of the swipe bar to move the image down. Shake to reset to default. Touch the flexible display to confirm.

### RESET BITZEE



**⚠ CAUTION - THIS ACTION CAUSES A FACTORY RESET AND ERASES ALL EXISTING PLAY HISTORY**

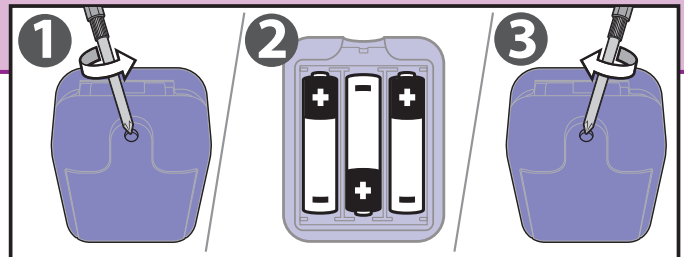
Hold the Bitzee case level and upright. Then, touch and hold the swipe bar to start the countdown. Do not lift your finger until the countdown finishes and you hear the alarm sound effect. Your Bitzee is now reset to the on-shelf demo.



## REPLACE BATTERIES

**LOW BATTERY WARNING**  
Before replacing batteries, shut case, or your pet progress may be lost.

1. Open the battery door with a screwdriver.
2. If used batteries are present, remove these batteries from the unit by pulling up on one end of each battery. DO NOT remove or install batteries using sharp or metal tools. Install new batteries as shown in the polarity diagram (+/-) inside the battery compartment.



3. Replace battery door securely. Check your local laws and regulations for correct recycling and/or battery disposal. Note: Batteries included are for in-store demonstration and should be replaced to improve performance. Before replacing batteries, shut case, or your pet progress may be lost.

**⚠ WARNING:** This toy produces flashes that may trigger epilepsy in sensitised individuals. To reduce exposure to such potential, play in a well-lit room, and do not flash lights directly into eyes.

**⚠ WARNING:** This toy contains inaccessible magnets. Exposed magnets, if inhaled or swallowed can stick together or to other metal objects, and can cause serious or fatal injury. Keep away from electronic and medical devices.

**⚠ WARNING: CHOKING HAZARD**  
– Small parts.  
Not for children under 3 years.



**⚠ CAUTION:** Batteries to be installed by adults only

**⚠ WARNING:** A very small percentage of individuals may experience epileptic seizures when exposed to certain light patterns or flashing lights. Such persons could risk seizure while viewing the lights from this product. This may occur even if there have been no previous medical problems or experience of epilepsy. If you or a member of your family has ever shown epileptic symptoms when exposed to flickering lights, you should consult with your doctor before using this or any similar products. If you experience any of the following symptoms, while playing with the toy – dizziness, altered vision, eye or muscle twitches, loss of awareness, disorientation, any involuntary movement, or convulsions - IMMEDIATELY discontinue and consult with your doctor before resuming play.

Spin Master Ltd., 225 King Street West, Toronto ON M5V 3M2 Canada  
Spin Master International B.V., Kingsfordweg 151, 1043 GR Amsterdam, NL  
Spin Master Toys UK Ltd. Boston House, Boston Drive, Bourne End, Buckinghamshire, SL8 5YS, UK  
Spin Master Inc., PMB #10053, 300 International Drive, Suite 100, Williamsville, NY 14221  
Spin Master Australia Pty Ltd, Suite 101, Level 1, 18-24 Chandos Street, St Leonards, NSW 2065; ☎1800 316 982

Spin Master Ltd. reserves the right to discontinue the Bitzee.com website at any time.

MADE IN CHINA

Patent information: patents.spinmaster.com.  
TM & ©2022 Spin Master Ltd. All rights reserved.

